

**6 Werona Road FAIRHAVEN VIC**

3 2 2

There is something deeply comforting about a property that has been quietly cared for over decades. With only two owners since new, from the moment you arrive at 6 Werona Road, you sense it ? this is a home that has been enjoyed, respected and thoughtfully looked after and that feeling carries through every space. The east facing aspect welcomes soft morning sunlight across the expansive deck and into the living areas ? the kind of light that encourages slow breakfasts, early swims and unhurried starts to the day. By afternoon, the home is naturally protected from the westerly sea breeze, creating a calm, sheltered environment when others are packing away outdoor furniture. The cathedral ceiling with exposed Oregon beams gives the living space warmth and character. It's the

**Type** : House  
**Price** : \$1,390,000  
**Land Size** : 1171 sqm  
**View** : <https://www.greateoceanproperties.com.au/8624047>

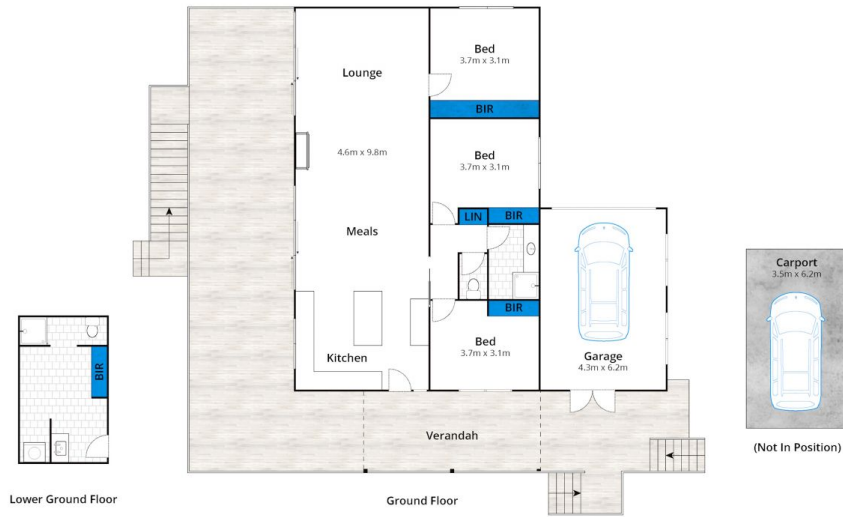


**Marty Maher**  
0352200000



**Michelle McDonald**  
0352200000

[For full version visit the website](https://www.greateoceanproperties.com.au)



Approx House Area 155m<sup>2</sup>  
Approx Land Area 1171m<sup>2</sup>

Whilst [bwrn.com.au](http://bwrn.com.au) has made every attempt to ensure the accuracy of the floor plan contained here, measurements are approximate and no responsibility is taken for any error, omission, or mis-statement. This plan is for illustrative purposes only.

## 6 Werona Road, Fairhaven

